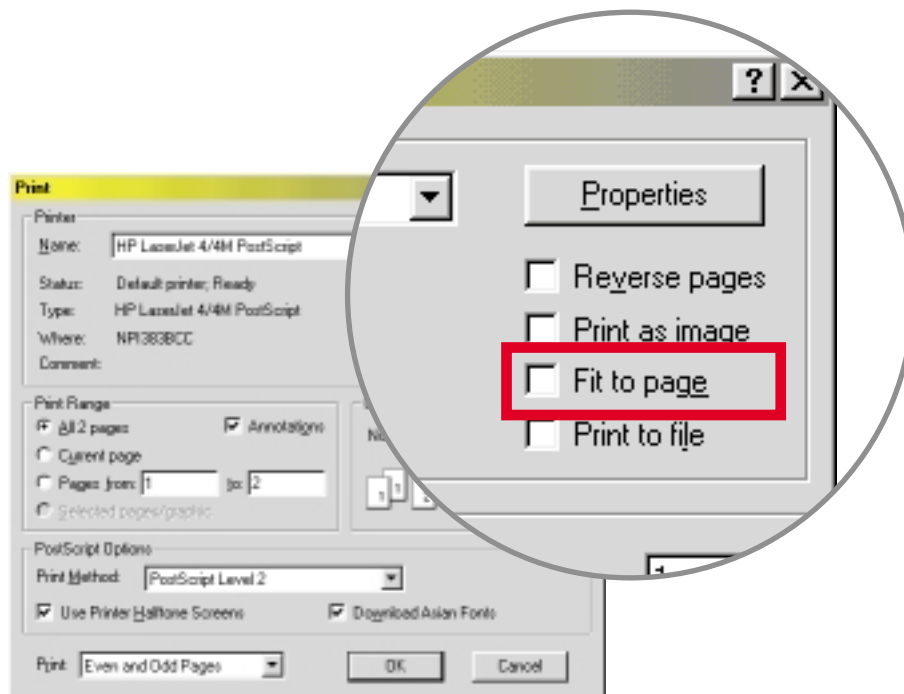


Printing

When you print your Near Vision Chart please ensure '**Fit to page**' is NOT selected. This will print the Near Vision Chart at actual size for an accurate reading.



The Near Vision Chart is for the sole and exclusive personal use of the individual who downloaded it.

Reading Assessment

When selecting any magnifying device it is important that the person who is going to use the unit does an assessment of their near vision requirement prior to ordering. The best way to assess the required magnification needed is by using a Near Vision Reading Chart. The chart assumes a need to read standard newsprint i.e. 8 point Times New Roman print.

Using the chart decide which is the smallest size of print that can be read comfortably. The figure next to that size of print on the chart is the optimum magnification required.

This figure is arrived at by a simple rule of thumb:

Magnification Required = Smallest Comfortable Test Type Size/Required Test Type Size

e.g. If a visually impaired person can just read the N24 line on the chart, and they would like to read newsprint which is N8 : Magnification Required = $N24/N8 = 3x$

However it should be noted that some individuals might require more or less magnification depending on their visual impairment, field loss or expectations.

Once the optimum magnification has been determined it is necessary to decide upon the form of magnifier that will best suit the individual's needs.

For information on visual device suppliers in your area please contact us.

The camp stood
until quite lately

A16 = 8X = 32D

7M

in a fold of the hill
near an old building

A15 = 6X = 24D

enclosed by an ivy clad wall
and the remains of an orchard

A14 = 5X = 24D

5M

on either side a chequer of ditches
A road ran between bare clay banks

A13 = 4X = 16D

2.5M

He led me through into a dark corridor.
I could just see a high curved roof.

A13 = 4X = 16D

3M

Then he opened a smooth swinging mahogany door.
We entered the room through a dim lit hall.

A11 = 2.5X = 10D

Light streamed through the shutters he folded one back.
The sun flooded the floor revealing a vast marble fireplace.

A10 = 2X = 8D

2M

Laid out on top of a chest of drawers were a collection of small presents.
The empty grate was hidden by a bunch of pampas grass and bullrushes.

A9 = 1.5X = 6.4D

1.5M

Then we were away, past the gates, past the lodges and out on to the main road.
Laid out on top of a chest of drawers were a collection of small presents.

A8 = 1.3X = 5.25D

And another image came to me, of an arctic hut and a trapper
alone with his furs and oil lamp and log fire; the remains of
supper on the table, a few books, skis in the corner; everything
dry and neat and warm inside and outside the last blizzard of
winter raging and the snow piling up against the door.

(From "Brideshead Revisited" by Evelyn Waugh)

immense snow came near arrow use.

aHad there been another year of peace, there would have been no farmhouse,
no wall, no apple trees. Already half a mile of concrete road lay between bar
clay banks, and on either side a chequer of open ditches showed where the
municipal contractors had designed a system of drainage. Another year of
peace would have made the place part of the neighbouring suburb. Now the
huts where we had wintered waiting their turn for destruction.

(From "Brideshead Revisited" by Evelyn Waugh)

nervous manner immune over unanimous wear

NEWSPRINT SAMPLES



© Keeler Ltd.

Used with permission of Keeler Ltd.